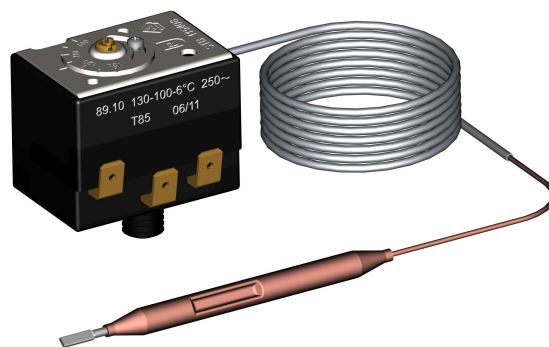


Safety thermal cut-out

89.00

Single-pole



Application

For heat generators with temperatures up to 350°C

Features

Electro-mechanical safety thermal cut-out (STB) with capillary sensor approved to DIN EN 14597 and EN60730-1/2-9

- If cut-out temperature is exceeded, circuit switches to OFF or changeover and stays in this position
- Fail safe design: Expansion liquid loss results in opening of contact 1-2
- Manuell resetting after sensing element has cooled by at least 10K
- Single-pole micro switch with on/off or change-over switch
- Time factor of sensing element better than DIN EN 14597
- Temperature compensated switching head
- Operation type 2.B.H.K.L.P (EN60730)
- RoHS-conform
- DIN CERTCO Registernumber: TR1107

Technical data

Switching system:

Endurance class	1.000 operations	
Nominal voltage/current 250 V AC	1-2 16 (3,5) A	1-4 4 (0.6) A
Protection against electric shock	for incorporation in class I equipment I	
Protection standard of housing	IP00 (EN 60 529)	
Overvoltage category	II	

Range of application:

Cut-out temperature	60 ... 350°C
• fixed adjustment	110...85°C, 120...95°C,
• adjustable	130...100°C
Max. sensing element temp.	t _{aus} + 25K
Ambiant temperature at switching head	max. 85 °C (T85)
Storage and transport temperature	-25...+60 °C

Calibration:

Calibrated for ambient temperature at switching head and capillary tube	23°C or 50°C (Tu23/Tu50 according to DIN EN 14597)
Calibration tolerance	- 4 K, max 6%
Drift	2 K
Time factor in water / in oil	< 45 s / < 60 s

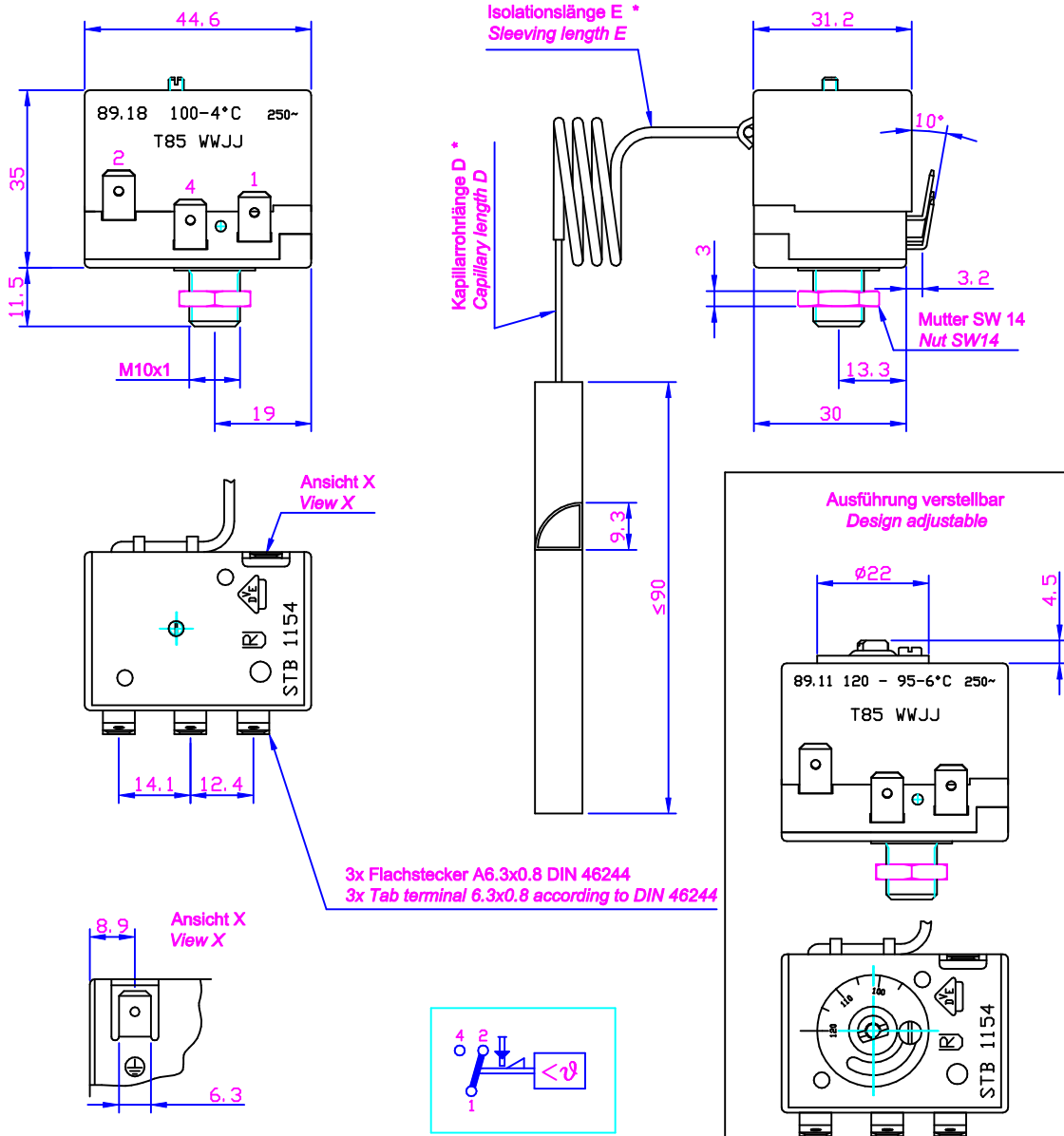
Design:

Capillary und sensing element	copper / stainless steel
Capillary length	500 ... 3500 mm
Phial forms	
• round, diameter	3, 4, 5, 6, 6.5, 7, 8, 9.5, 10, 11, 12 mm
• half-, third-, quarter circle	
Diaphragm	stain less steel
Connection and earthing terminals	Tab terminal A6.3x0.8 according to DIN46244

DS89 e-6/18

Sicherheits - Temperaturbegrenzer Typ 89.00

Safety thermal cut-out type 89.00



Ausschalttemperatur Cut-out temperature	Ausführung Design	* Ausschalttemperatur, Kapillarrohrlänge, Isolationslänge sowie Fühlerformen können nach Kundenwunsch verändert werden. * Cut-out temperature, capillary length, sleeving length and phial forms are adjustable to customers specific requirements.
130 °C ... 100 °C 120 °C ... 95 °C 110 °C ... 85 °C	verstellbar adjustable	
60° C - 350 °C *	fest eingestellt fixed adjustment	